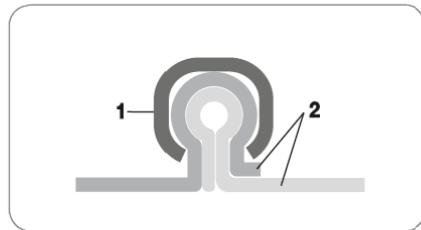




VENT CLIP CAR



Exhaust gas hose for temperatures up to +300°C

Material

1. Clip profile spiral: hot-dip galvanised steel band
2. Wall: special coated textile high temperature fabric

- Technical hose must be adequately supplied with fresh air (min. 50%)
- The electrostatic charges are dissipated by earthing the spiral on both sides

Properties



- 60°C to + 300°C
peaks to + 350°C



hardly
inflammable



compressable 1:6



highly flexible



clamp mechanism



RoHS compliant

Chemical resistance

- Look chemical resistance data sheet

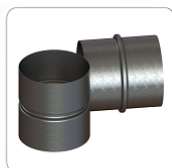
Production standards

- Production lengths: from 3m to 10m
- Color: outer: green-brown inner: silver
- Available on request with stainless steel spirals

Connectors:



Clip Clamp



Hose Connector



Hose Reducer

DN (inner diameter) [mm]	Op. pressure [bar]	Vacuum [mm H ₂ O]	Bend radius [mm*]	Weight [kg/m]
45	0,920	3400	27	0,50
50	0,900	3200	30	0,50
55	0,850	2650	33	0,60
60	0,780	2220	36	0,60
65	0,680	1900	39	0,70
70	0,670	1600	42	0,70
75	0,620	1400	45	0,80
80	0,610	1250	48	0,80
90	0,560	1000	54	0,80
100	0,510	800	60	0,90
110	0,480	660	66	0,90
120	0,360	560	72	1,00
125	0,330	500	75	1,00
130	0,280	470	78	1,10
140	0,250	410	84	1,10
150	0,220	360	90	1,20
160	0,210	310	96	1,20
170	0,190	280	102	1,30
180	0,172	245	108	1,40
200	0,148	200	120	1,60
215	0,128	175	151	1,70
225	0,115	160	158	1,80
250	0,100	130	175	2,00
275	0,080	105	193	2,10
300	0,070	90	210	2,20
315	0,062	80	221	2,20
325	0,059	75	228	2,30
350	0,056	65	245	2,60
375	0,050	55	263	2,90
400	0,047	50	280	3,10
450	0,045	40	360	3,60
500	0,043	32	400	4,10
550	0,042	26	440	4,60
600	0,039	22	480	5,10
700	0,031	16	560	6,00
800	0,022	13	640	6,90
900	0,016	10	720	7,80

* It applies to the inside of the bended hose.

Above data refer to ambient and medium temperature of 20°C. Products and technical data contained in this catalog are presented for informational purposes only, are subject to change without notice and should not be considered as a commercial offer.

Company **MASTERVENT** is not responsible for any errors or inaccuracies that may appear in the publication. The tolerance of inner diameter of the hose is from +1mm to +3mm depending on the diameter.