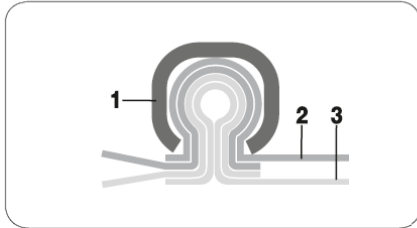


# HIGH TEMPERATURE HOSE



## VENT CLIP HT 650



### High temperature hose for temperatures up to +650°C

#### Material

1. Clip profile spiral: hot-dip galvanised steel band
2. Outer layer: special coated high temperature fabric reinforced with VA wire
3. Inner layer: special coated high temperature fabric reinforced with VA wire

- Technical hose must be adequately supplied with fresh air (min. 50%)
- The electrostatic charges are dissipated by earthing the spiral on both sides

#### Properties



-20°C to +650°C  
peaks to +750°C



reinforced with  
VA wire



mechanically  
resistant



double-layer



highly flexible



clamp mechanism



RoHS compliant

#### Chemical resistance

- Look chemical resistance data sheet

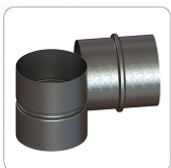
#### Production standards

- Production lengths: from 3m to 10m
- Color: outer: silver inner: silver
- Available on request with stainless steel spirals from DN 100

#### Connectors:



Clip Clamp



Hose Connector



Hose Reducer

DN (inner diameter) [mm]	Vacuum [mm H <sub>2</sub> O]	Bend radius [mm*]	Weight [kg/m]
50	3950	30	1,10
55	3500	33	1,19
60	3180	36	1,29
65	2990	39	1,38
70	2640	42	1,47
75	2550	45	1,57
80	2280	48	1,66
90	2090	54	1,85
100	1680	60	1,57
110	1390	66	1,71
120	1180	72	1,85
125	1050	75	1,93
130	990	78	2,00
140	880	84	2,14
150	760	90	2,29
160	670	96	2,43
170	590	102	2,57
175	560	105	2,65
180	520	126	2,75
200	420	140	3,01
215	380	151	3,22
225	350	158	3,36
250	290	175	3,72
275	230	193	4,08
300	190	210	4,44
315	180	221	4,66
325	170	228	4,80
350	175	245	5,16
375	130	263	5,55
400	110	280	5,91
450	90	360	6,63
500	70	400	7,35
550	60	440	8,07
600	50	480	8,79
700	40	560	10,23
800	30	640	11,67
900	25	720	13,11

\* It applies to the inside of the bended hose.

Above data refer to ambient and medium temperature of 20°C. Products and technical data contained in this catalog are presented for informational purposes only, are subject to change without notice and should not be considered as a commercial offer.

Company **Mastervent** is not responsible for any errors or inaccuracies that may appear in this publication. The tolerance of inner diameter of the hose is from +1mm to +3mm depending on the diameter.