

CHEMICAL RESISTANT HOSES



VENT CLIP PTFE



Chemical resistant hose up to +250°C

Material

1. Clip profile spiral: hot-dip galvanised steel band
2. Outer layer: PTFE coated glass fabric

- The electrostatic charges are dissipated by earthing the spiral on both sides

Properties



- 150°C to + 250°C
peaks to + 270°C



chemical resistant



compressable 1:6



highly flexible



clamp mechanism



RoHS compliant

Chemical resistance

- Look chemical resistance data sheet

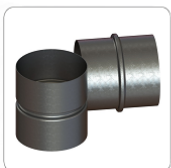
Production standards

- Production lengths: from 3m to 10m
- Color: outer: brown inner: brown
- Available on request with stainless steel spirals

Connectors:



Clip Clamp



Hose Connector



Hose Reducer

DN (inner diameter) [mm]	Op. pressure [bar]	Vacuum [mm H ₂ O]	Bend radius [mm*]	Weight [kg/m]
45	0,870	3400	27	0,40
50	0,850	3200	30	0,40
55	0,780	2650	33	0,40
60	0,680	2220	36	0,50
65	0,590	1900	39	0,50
70	0,530	1600	42	0,50
75	0,470	1400	45	0,60
80	0,430	1250	48	0,60
90	0,355	1000	54	0,60
100	0,300	800	60	0,60
110	0,258	660	66	0,60
120	0,224	560	72	0,70
125	0,210	500	75	0,70
130	0,197	470	78	0,70
140	0,175	410	84	0,80
150	0,157	360	90	0,80
160	0,140	310	96	0,90
170	0,128	280	102	0,90
180	0,117	245	108	1,00
200	0,099	200	120	1,10
215	0,088	175	151	1,20
225	0,082	160	158	1,30
250	0,069	130	175	1,40
275	0,059	105	193	1,70
300	0,052	90	210	1,90
315	0,048	80	221	2,00
325	0,046	75	228	2,10
350	0,040	65	245	2,30
375	0,036	55	263	2,70
400	0,033	50	280	2,90
450	0,027	40	360	3,50
500	0,023	32	400	3,90
550	0,020	26	440	4,40
600	0,017	22	480	4,90
700	0,014	16	560	5,80
800	0,011	13	640	6,70
900	0,009	10	720	7,60

* It applies to the inside of the bended hose.

Above data refer to ambient and medium temperature of 20°C. Products and technical data contained in this catalog are presented for informational purposes only, are subject to change without notice and should not be considered as a commercial offer.

Company **Mastervent** is not responsible for any errors or inaccuracies that may appear in the publication. The tolerance of inner diameter of the hose is from +1mm to +3mm depending on the diameter.