

# CHEMICAL RESISTANT HOSES



## VENT CLIP PTFE H



### Chemical resistant hose up to +175°C

#### Material

1. Clip profile spiral: hot-dip galvanised steel band
2. Outer layer: Hypalon® coated polyester fabric
3. Inner layer: PTFE foil

- The electrostatic charges are dissipated by earthing the spiral on both sides

#### Properties



- 40°C to + 175°C  
peaks to + 190°C



chemical resistant



ozone resistant



UV resistant



double-layer



compressable 1:4



highly flexible



clamp mechanism



RoHS compliant

#### Chemical resistance

- Look chemical resistance data sheet

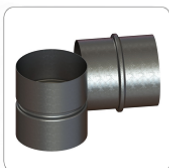
#### Production standards

- Production lengths: from 3m to 10m
- Color: outer: black inner: white
- Available on request with stainless steel spirals

#### Connectors:



Clip Clamp



Hose Connector



Hose Reducer

DN (inner diameter) [mm]	Op. pressure [bar]	Vacuum [mm H <sub>2</sub> O]	Bend radius [mm*]	Weight [kg/m]
50	0,900	4400	30	0,50
55	0,850	3630	33	0,50
60	0,780	3060	36	0,60
65	0,680	2610	39	0,70
70	0,670	2250	42	0,70
75	0,620	1960	45	0,80
80	0,610	1720	48	0,80
90	0,560	1360	54	0,90
100	0,510	1100	60	1,00
110	0,480	920	66	1,10
120	0,360	770	72	1,10
125	0,330	710	75	1,20
130	0,280	650	78	1,20
140	0,250	570	84	1,30
150	0,220	490	90	1,30
160	0,210	430	96	1,30
170	0,190	390	102	1,40
175	0,185	370	105	1,40
180	0,172	350	108	1,40
200	0,148	280	120	1,60
215	0,128	250	151	1,80
225	0,115	220	158	2,00
250	0,100	180	175	2,10
275	0,080	150	193	2,30
300	0,070	130	210	2,40
315	0,062	110	221	2,60
325	0,059	105	228	2,80
350	0,056	90	245	3,30
375	0,050	80	263	3,50
400	0,047	70	280	3,80
450	0,045	55	360	4,20
500	0,043	45	400	4,70
550	0,042	40	440	5,30
600	0,039	33	480	5,90
700	0,031	22	560	6,90
800	0,022	18	640	7,60
900	0,016	14	720	8,20

\* It applies to the inside of the bended hose.

Above data refer to ambient and medium temperature of 20°C. Products and technical data contained in this catalog are presented for informational purposes only, are subject to change without notice and should not be considered as a commercial offer.

Company **MASTERVENT** is not responsible for any errors or inaccuracies that may appear in the publication. The tolerance of inner diameter of the hose is from +1mm to +3mm depending on the diameter.