

# CHEMICAL RESISTANT HOSES



## VENT CLIP VITON



### Chemical resistant hose up to +210°C

#### Material

1. Clip profile spiral: hot-dip galvanised steel band
2. Wall: Viton® coated polyester fabric

- The electrostatic charges are dissipated by earthing the spiral on both sides

#### Properties



- 25°C to + 210°C  
peaks to + 240°C



chemical  
resistant



ozone resistant



UV resistant



compressable 1:6



highly flexible



clamp mechanism



RoHS compliant

#### Chemical resistance

- Look chemical resistance data sheet

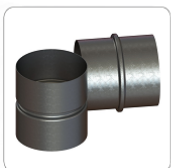
#### Production standards

- Production lengths: from 3m to 10m
  - Color: outer: red inner: black
- Available on request with stainless steel spirals

#### Connectors:



Clip Clamp



Hose Connector



Hose Reducer

DN (inner diameter) [mm]	Op. pressure [bar]	Vacuum [mm H <sub>2</sub> O]	Bend radius [mm*]	Weight [kg/m]
45	0,920	4400	24	0,40
50	0,900	4000	27	0,40
55	0,850	3300	30	0,40
60	0,780	2780	33	0,50
65	0,680	2370	36	0,50
70	0,670	2040	42	0,50
75	0,620	1780	45	0,60
80	0,610	1560	48	0,60
90	0,560	1230	54	0,60
100	0,510	1000	60	0,60
110	0,480	830	66	0,70
120	0,360	700	72	0,70
125	0,330	640	75	0,80
130	0,280	590	78	0,80
140	0,250	510	84	0,80
150	0,220	440	90	0,90
160	0,210	390	96	0,90
170	0,128	350	102	0,90
180	0,117	310	108	1,00
200	0,148	250	120	1,20
215	0,128	220	151	1,30
225	0,115	200	158	1,40
250	0,100	160	175	1,60
275	0,080	130	193	1,90
300	0,070	110	210	2,10
315	0,062	100	221	2,10
325	0,059	95	228	2,20
350	0,056	80	245	2,50
375	0,050	70	263	2,90
400	0,047	63	280	3,10
450	0,045	50	360	3,60
500	0,043	40	400	4,10
550	0,042	33	440	4,60
600	0,039	28	480	5,10
700	0,031	20	560	6,00
800	0,022	16	640	6,90
900	0,016	12	720	7,80

\* It applies to the inside of the bended hose.

Above data refer to ambient and medium temperature of 20°C. Products and technical data contained in this catalog are presented for informational purposes only, are subject to change without notice and should not be considered as a commercial offer.

Company **Mastervent** is not responsible for any errors or inaccuracies that may appear in the publication. The tolerance of inner diameter of the hose is from +1mm to +3mm depending on the diameter.