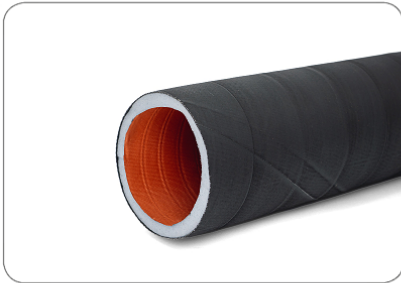
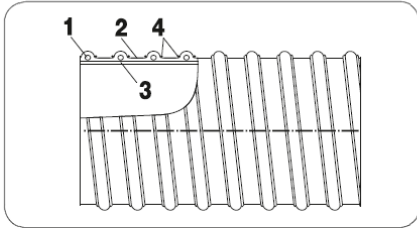
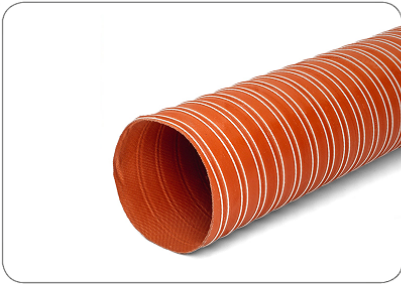


TEMPERATURE RESISTANT HOSES



VENT SIL 2



High temperature hose for temperatures up to +250°C

Material

1. Spiral: spring steel wire
2. Outer layer: silicone coated glass fabric
3. Inner layer: silicone coated glass fabric
4. Cord: fiberglass fabric

- The electrostatic charges are dissipated by earthing the spiral on both sides

Properties



- 70°C to + 250°C
peaks -85°C do +300°C



humidity
proof



light



double-layer



highly flexible



RoHS compliant

Chemical resistance

- Look chemical resistance data sheet

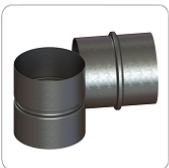
Production standards

- Production lengths: 4 m
- Color: outer: red inner: red
- Available on request in an insulated version VENT ISO SIL 2

Connectors:



Clamp



Hose Connector



Hose Reducer

DN (inner diameter) [mm]	Op. pressure [bar]	Vacuum [mm H ₂ O]	Bend radius [mm*]	Weight [kg/m]
13	2,800	6500	15	0,16
19	2,800	6500	15	0,19
26	2,800	6500	15	0,23
30	2,800	6500	15	0,25
32	2,800	6500	16	0,26
38	2,600	6000	18	0,31
41	2,600	6000	19	0,32
42	2,600	6000	19	0,32
44	2,600	5600	21	0,34
45	2,600	5600	21	0,34
51	2,600	5200	24	0,36
55	2,500	4900	27	0,42
57	2,500	4900	28	0,43
60	2,400	4800	31	0,47
63	2,400	4800	31	0,49
64	2,400	4800	31	0,49
65	2,400	4800	31	0,50
70	2,300	4400	35	0,53
76	2,200	4300	38	0,58
80	2,100	4200	40	0,62
83	2,100	4100	42	0,64
90	2,000	4000	44	0,69
95	1,900	3700	48	0,73
102	1,900	3500	52	0,77
108	1,700	3100	55	0,83
110	1,700	3000	57	0,85
114	1,600	2900	57	0,89
120	1,600	2800	61	0,94
127	1,400	2500	64	1,00
130	1,300	2300	65	1,02
140	1,300	1900	70	1,11
152	1,200	1700	75	1,20
160	1,100	1500	80	1,28
173	1,000	1300	87	1,40
178	1,000	1200	89	1,45
180	1,000	1200	90	1,48
203	0,700	900	101	1,65
229	0,600	800	125	1,90
254	0,500	700	150	2,14
305	0,300	400	210	2,58

* It applies to the inside of the bended hose.

Above data refer to ambient and medium temperature of 20°C. Products and technical data contained in this catalog are presented for informational purposes only, are subject to change without notice and should not be considered commercial offer.

Company **Mastervent** is not responsible for any errors or inaccuracies that may appear in the publication. The tolerance of inner diameter of the hose is from +1mm to +3mm depending on the diameter.